

# TECHNICAL RIDER

## 'MOVING YOU – Lilia Mestre

### *GENERAL*

Adjustments to this technical rider may be made if required due to specific features of the venue but only in negotiation with the company.

THIS TECHNICAL RIDER IS AN INTEGRAL PART OF THE CONTRACT AND IS TO BE SIGNED BY THE TECHNICAL DIRECTOR OF THE THEATRE AND RETURNED TO THE COMPANY.

Please provide us with:

- The full address of the theatre and a plan of its location. - A detailed technical plan of the venue. This plan should also include the audience area with clear indications of the seating arrangement. - A full list of available stage, light and sound equipment. - The name and co-ordinates of your technical director.

Duration of the performance:

### *STAGE / SET*

**Required minimum stage dimensions:**

- Width: 10,5m
- Depth: 16,5m

The audience is separated in two and will sit on both sides on tribunes, with the performance space in between. To make this 2-sided audience possible we need a stage with enough depth (at least 16m) and a minimum of 10m depth. The maximum amount of public on each side is 50, so 4 rows of 12.

### *LIGHT*

On page 3 and 4 you'll find a 2D drawing with our standard plan for the lights, and a list of lights to be provided by the theatre.

## SOUND

### To be provided by the theatre:

- 1 mixing board. Minimum 8 input channels, 6 groups outputs - a multi cable (balanced), for connecting soundcard to mixing board. - Speakers : - 4 similar loudspeakers. (hanging, on both sides of the stage, audience is sitting on both sides of the stage) - 2 bass subwoofers on the floor (on each side).
- Speakers setting: 2 speakers front left and right: hanging from the grid (see the setting plan) - 2 speakers back left and right hanging from the grid (see the setting plan) - 2 bass subwoofers on the floor behind the side curtains, on each side
- 1 sensitive overhead micro (condensator) (hanging from grid)
- 2 shure sm58 micro's (provided with sufficient xlr cable, min 20m), + 1 cable from mixing board to soundcard
- 1 cd player with a direct line to the line-in of a radio (minijack)

## DURATION

60 min.

## SCHEDULE

- |       |   |
|-------|---|
| Day 1 | Set up between 9am and 6pm<br>Rehearsal in the evening                  |
| Day 2 | Morning: technical corrections<br>Afternoon: rehearsal<br>Evening: show |

## REQUIRED STAFF

On the setup day minimum 3, ideally 4 technicians (1 sound, 3 lights/stage)

## CONTACT

### Administration

Helga Baert  
+32 (0)497885388  
[helga@mokum.be](mailto:helga@mokum.be)

### Light

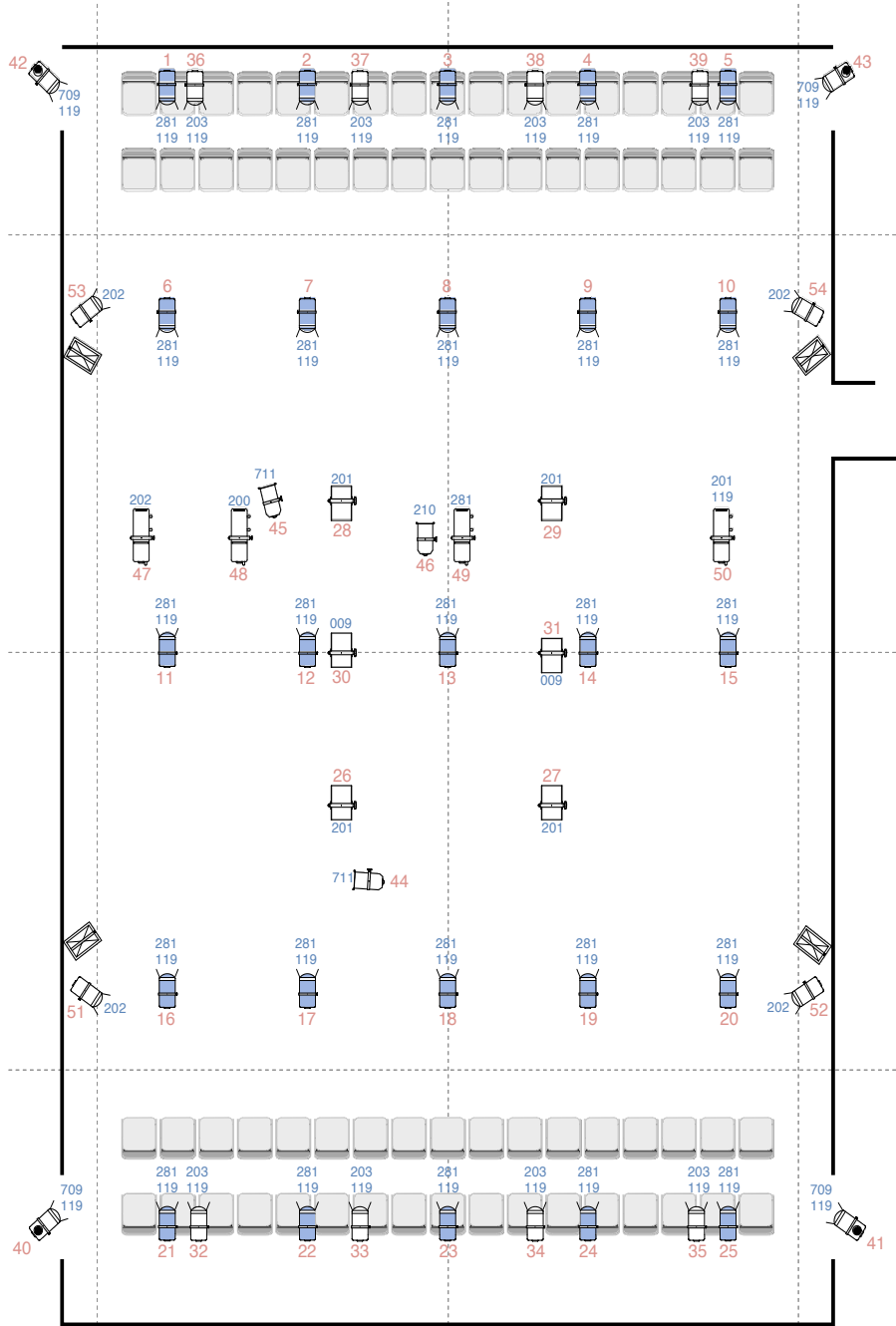
Jan Van Gijsel  
+32(0)496123345  
[janvg@mac.com](mailto:janvg@mac.com)

### Sound

David Elchardus  
+32 (0)2 541 01 70 |  
[david.elchardus@pianofabriek.be](mailto:david.elchardus@pianofabriek.be)

### Lilia Mestre

+32 (0) 478 31 75 52  
[liliamestre@gmail.com](mailto:liliamestre@gmail.com)



## LEGENDA



25 x PC 1kW



12 x PC 1kW



4 x PC 1kW op statief



4 x Profiel 1kW (ADB DW, DVW, Juliat 614SX, 613SX)



6 x Asymmetrische Flood 1kW (ACP)



3 x PAR64 (1 x CP61, 2 x CP62)

IN TOTAAL 54 DIMMERS



4 speakers

## FILTER CUT LIST

**L009:** 2 x Asymmetrical Flood 1kW**L200:** 1 x Profiel 1kW**L201:** 4 x Asymmetrical Flood 1kW  
1 x Profiel 1kW**L202:** 4 X PC 1kW  
1 X Profiel 1kW**L203:** 8 x PC 1kW**L210:** 1 x PC 1kW  
1 x PAR64 1kW**L281:** 25 x PC 1kW  
1 x Profiel 1kW**L709:** 4 x PC 1kW (op statief)**L711:** 1 x PAR64**R119:** 37 x PC 1kW  
4 x Profiel 1kW