

SUPERAMAS – Technical Rider YOUDREAM

Technical director, stage and transport manager

Martin SCHWAB +436604019436 dinuschwab@hotmail.com

Sound designer

Olivier TIRMARCHE +33614012325 olivier@superamas.com

Light designer

Henri Emmanuel DOUBLIER +33662873074 henri@superamas.com

LIGHT:

- 96 dimmers 2kw dmx512
- 1 dimmer 5kw dmx512

- 10 profiles 2kw 20/36° type 714 Julia (it can be 16 profiles 1kw but 1 really need 2 profile 2kw)
- 1 profiles 2kw 50°
- 5 profiles 1kw 36°
- 6 profiles 1kw 50°
- 12 PC or Fresnels 2kw
- 12 PC 1kw with barndoors
- 1 Fresnel 5kw
- 12 floodlight 1kw
- 24 Pars 64 cp62
- 2 Pars 64 cp60
- 2 stroboscopes Martin atomic 3000

- 16 strong tripod stands (10 of 2m and 6 of 3m) and 4 pipes of 2m to put on the stands
- 1 pipe of 2m to underhand a profile

Superamas brings:

- 4 Pars led 18 RGB 3w
- 1 red heads
- 16 halogen lamps 50w
- 4 dichroic leds
- 8 blue leds
- 1 Sunstrip
- 5 Manfrotos stands

filters: red Rosco 026, green 139, blue 119, 156, 136, 711, 203, 201, 200, R132, R114

We need dmx cables 3 and 5 pins for led pars, our fan and schroller.

Our Light board is a Lanbox dmx512

SOUND:

- 1 digital mixing board Yamaha LS9-32
 - 2 microphones SM58
 - 2 microphone stands with booms
 - 2 wireless Sennheiser bodypack with 2 lavalier microphones with ear set support
 - 1 wireless handset Sennheiser or Shure
 - 4 DI box 48v powered
 - 4 graphic stereo equalizers 31 bands (8 mono lines to EQ). Ref: BBS 960, dbx, Klark (no Yamaha).
- All the speakers have to be equalized with analog graphic equalizers. The digital Eqs included in the LS9-32 will be use for the wedges and the mics
- XLR cables

Speakers set-up (see the plans set-up 1 & 2) :

- 8 similar speakers: 2 Front, 2 Clusters, 2 Back, 2 Stage. Ref : L Acoustic MTD 112 or 115, d&b C90 or C60, John Meyer, EAW, KS, Nexo PS15... According to the theater volume
 - o 2 front speakers hanged
 - o 2 cluster speakers (2xmono)
 - o 2 speakers on stage hanged in the back of the stage
 - o 2 speakers hanged or on stands in the rear of the audience rack
- 2 sub bass speakers
- 4 wedges on stage (stage monitors)
- Amplification system + speakers cables for the whole system

Notes: lines from stage to the mixing board = 12

VIDEO

- 1 beamer (4000 lumens minimum) hung in front of the screen, roof position (hook and right optic to fit the screen 4 m large) **with 16/9 (large screen) function.**
- 1 x 50m DMX cable for the video shutter.
- 1 x 50m VGA video cable for the computer

SET

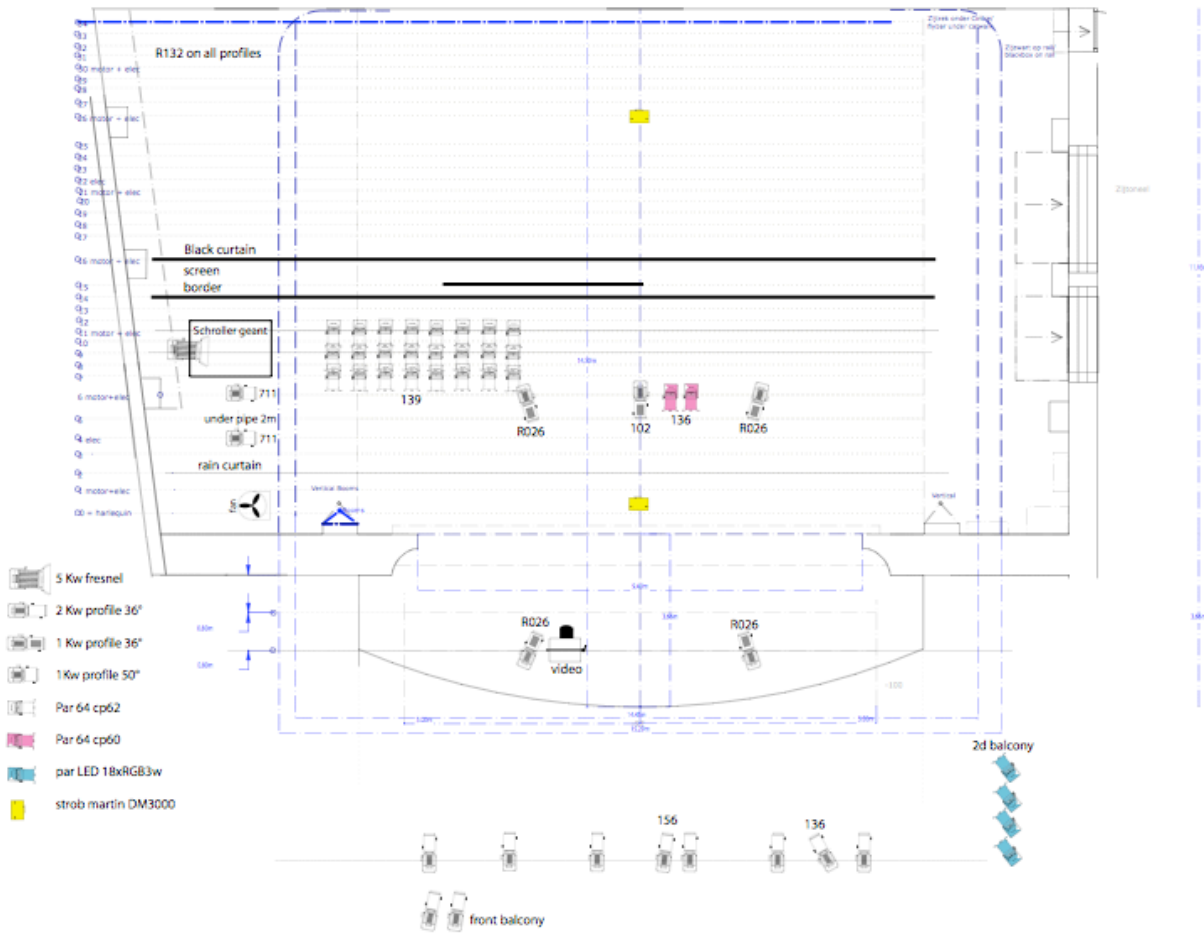
- White dance floor for front part of the stage (9m/12m)
- Black dance floor for rear part of the stage (6m/12m)
- Black opening curtain at the middle of the stage
- 3 Borders to hide the screen and pipes
- Black curtain at the back and sides if the theater if it is not black and clean








IMPORTANT:

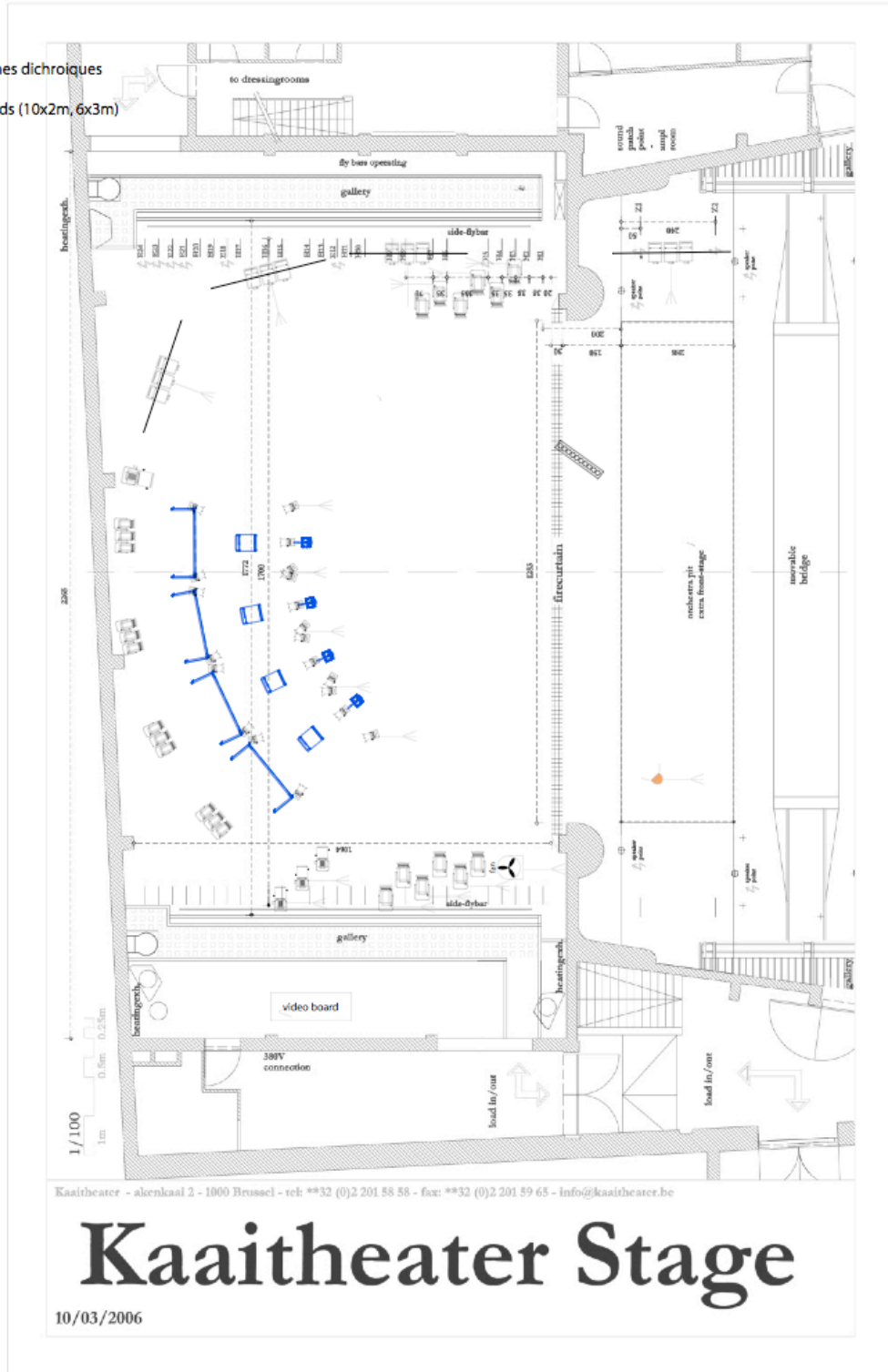
We hang up a "rain" system wich spreads around 60 liters of water on the dance floor at the end of the show. We bring a vacuum cleaner to suck this water after the show, but we don't bring any kind of floor protection (as plastic cover), if needed the theatre should provide such a floor protection to set under the dance floor.

PLANS

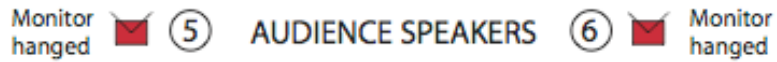
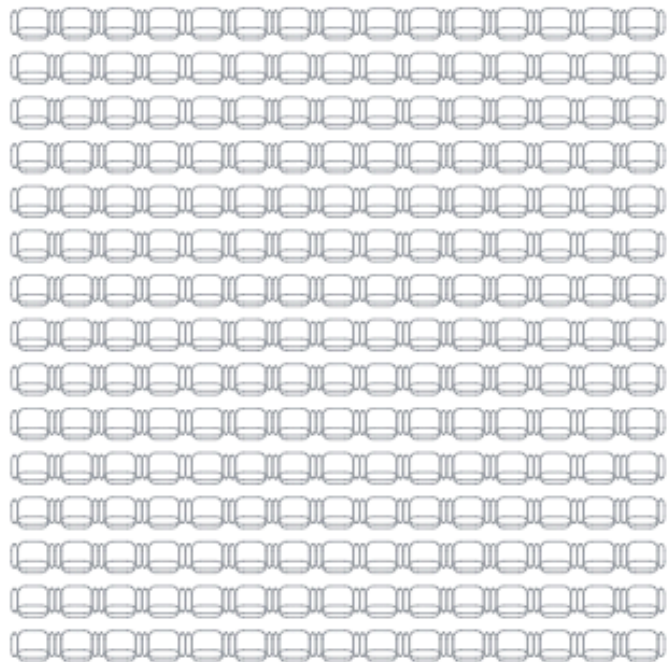
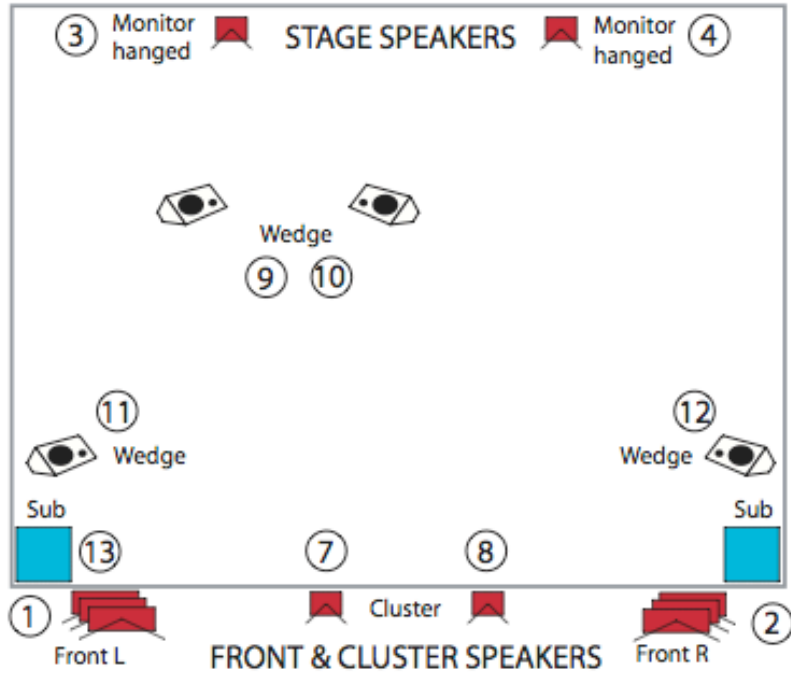
Superamas YOUDREAM
Gent



-  1 2kw profile 50°
-  3 1 kw profile 50°
-  12 2kw fresnels or PC
-  1 red head
-  16 50 hallogènes dichroïques
-  16 strong stands (10x2m, 6x3m)
-  1 sun strip



SUPERAMAS - YOUDREAM- LOUDSPEAKERS SET UP 1/2



SUPERAMAS - YOUDREAM- LOUDSPEAKERS SET UP 2/2

SECTION

